

4TH TO 15TH MARCH 2024

EXPERIENCE STEWARDSHIP  
UNSTOPPABLES

# Journey to the Heart of Antarctica

A BUSINESS RETREAT LIKE NO OTHER



INSIDER  EXPEDITIONS

kea

WONDER  WANDER

 UNSTOPPABLES

# EVENT & COMMUNITY ARCHITECT

We have 20 years experience producing retreats, experiences and events from team days for 5 people to audiences of 3,000. Over 30,000 people have experienced a life changing experience that we had the pleasure of designing.









## EXPEDITION LEADERS

### Steve Pirie-Nally

Meet Steve Pirie, the driving force behind transformative ventures. From redefining travel experiences as Director of Strategic Partnerships at Insider Expeditions, to crafting unforgettable events through Island in a Box and more recently wellbeing and mindset by design space Wonderlab Steve's innovative spirit shines. As Chief of Wander at Wonder & Wander, he orchestrates life-changing events and consults for future-ready organizations. Previously co-founder of Nurture Change, Steve unites entrepreneurs for growth and connection.

His journey weaves through Unleashed Grad Trips, Spirit of Sharing, and Perform Better, each leaving an indelible mark. Steve's legacy? A symphony of innovation, partnership, and global transformation. Steve is dedicated to connecting people, experiences and travel to catalyze positive change.

### Sarah Pirie-Nally

Sarah is a visionary leader and creative strategist with a passion for driving positive change through innovation and design. As the Chief of Wonder & Co-Founder at Wonder & Wander + Wonderlab, she pioneers global ecosystems, specializing in Experience Design, Innovation Consultancy, Sales Mastery, and Customer Experience. With a focus on enhancing every aspect of the customer journey, Sarah's expertise extends to crafting transformative travel experiences as Chief Design Officer at Insider Expeditions, prioritizing sustainability and cultural immersion. Her entrepreneurial spirit shines through as Founder & CEO of SHE EVOLVES, empowering growth through personal and professional tools. With a background in championing all-natural baby shoes at Sienna Baby and a legacy of fostering innovation through The Wonder Tribe and Nurture Her - Business Retreat, Sarah is dedicated to shaping success stories and catalyzing positive change. 🚀





## EXPEDITION LEADERS

### **Rhonda Swan**

Rhonda Swan is a dynamic and accomplished business leader, women's empowerment advocate, and author. As the CEO of the Unstoppable Branding Agency, a woman-owned and 85% women-run company, Rhonda has been recognized by Forbes Magazine as a woman of diversity to watch

### **Hanalei Swan**

Hanalei Swan is a 16 year old Fashion Designer, artist, international speaker, best selling author and model.

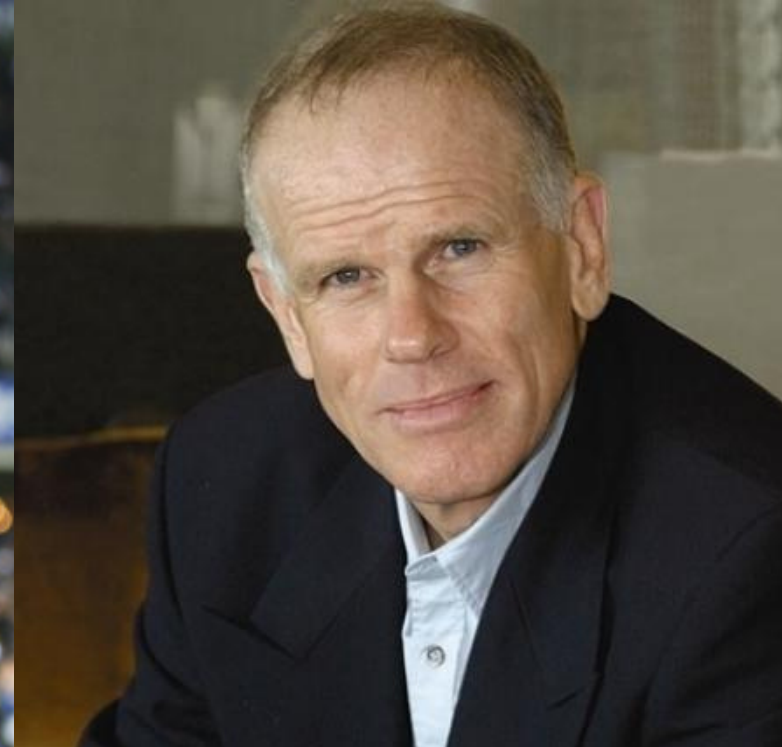
### **Brian Swan**

Brian Swan is the co-founder of the Unstoppable Branding Agency, founder of Unstoppable Beard and the Dad of the Unstoppable Family.





## EXPEDITION LEADERS



### **Sir Graham Henry**

Sir Graham Henry is widely regarded as one of the greatest coaches in rugby history. It was his tenure as head coach of the All Blacks that defined his career. He was appointed in 2004 and led the team to victory in the 2011 Rugby World Cup. He is widely credited with transforming the All Blacks into one of the most dominant teams in the history of the sport. In recognition of his contribution to rugby, Henry was knighted in 2012. He continues to be involved in the sport as a commentator and mentor to up-and-coming coaches.

### **Lady Raewyn Henry**

Lady Raewyn Henry is a sports scientist and performance consultant. She gained recognition for her work as a consultant for the All Blacks rugby team, which she served alongside her spouse, Sir Graham Henry. She holds a PhD in sports science from the University of Auckland and has received many awards for her services to sport, including the New Zealand Order of Merit in 2011. She is also involved in community service, particularly in advocating for men's health. Today, Henry is a respected speaker and mentor in sports science and coaching.

### **Peter Hillary**

Peter Hillary is a renowned adventurer, environmentalist, and speaker from New Zealand, following in the footsteps of his famous father, Sir Edmund Hillary, who was the first person to climb Mount Everest. Peter has also scaled the world's highest peak and has completed many other expeditions, including traversing Antarctica, climbing Aconcagua, and reaching the North Pole. Peter is actively involved in environmental efforts and his passion for adventure and commitment to protecting our planet make him an inspiration to many.



## EXPEDITION LEADERS

### **Damon Gameau**

Damon Gameau is an Australian actor, director, and writer. He studied at the Victorian College of the Arts in Melbourne and has acted in numerous television shows, films, and theatre productions. In 2015, he wrote, directed and starred in the documentary "That Sugar Film," which investigates the impact of a high-sugar diet on the human body. He is also an advocate for sustainable living and has launched several projects to promote environmental awareness, including the "Regenesis" project in 2020.

### **Simon Bowen**

Simon turns complex thoughts and ideas into powerful, million-dollar visual models that drive revenue and growth. A great visual model is really a million-dollar map of someone's thinking! Simon's method of using models to accelerate thinking and elevate influence has spread to over 30 countries and is used in more than nine different languages. His flagship model, The Genius Model ® has generated hundreds of millions of dollars in sales and changed the game of selling forever.



# AN EXPEDITION LIKE NO OTHER

SOUTH PACIFIC  
OCEAN

SOUTH ATLANTIC  
OCEAN

BUENOS AIRES

FREE ROUNDTrip PRIVATE  
CHARTER JET SERVICE

USHUAIA

DRAKE  
PASSAGE

SOUTH  
SHETLAND  
ISLANDS

ANTARCTIC  
PENINSULA

66° 33' ANTARCTIC CIRCLE



# ITINERARY



## ORLANDO - USHUAIA – ROUNDTrip | 11 NIGHTS



### DAYS 1-3 | BUENOS AIRES, ARGENTINA

Arrive in Buenos Aires and spend two nights acclimating and exploring this extraordinary city before continuing onwards.

### DAY 4 | USHUAIA, ARGENTINA

A sprawling city of colorful buildings framed by the snow-capped Martial Mountains serve as the backdrop for the southernmost city in the world. A mix of historic buildings and rugged nature make this city a welcoming stop for travelers venturing to the Seventh Continent.

After an expedited customs process from our private charter landing, enjoy a welcome breakfast and overview of this charming city before boarding the World Navigator.

### DAYS 5-6 | DRAKE PASSAGE

Voyage beyond the Beagle Channel and navigate the famed Drake Passage. Petrels and albatrosses that glide across the skies lead the way on this waterway where cold southern ocean meets warm northern sea water. While the waterway is famous for its challenging navigation, you may still get another side of the "Drake Lake," as on some occasions, the channel is calm and flat. As you emerge from the Drake Passage, the mammoth, icy peaks of the South Shetland Islands loom ahead, greeting you on your victorious landing which is likely to happen before sunset on Day 4.

During the crossing, enjoy lectures on the wildlife we can expect to see in the days ahead, as well as expert talks by the seasoned guides on the ship.

# ITINERARY



## DAY 7 | SOUTH SHETLAND ISLANDS

The South Shetland Islands are silent and serene. Natural wonders like the black and white effect of Deception Island and the peaks of massive glaciers sitting atop the water's surface inspire awe and admiration – even from the most veteran explorers. The stillness of the Shetland Islands evokes a sense of wilderness left to be discovered. Along the rugged cliffs of Brown Bluff, the exposed portion of a glacial volcano, you can hike to a vantage point over expanses of ice and ocean.

Deception Island, the caldera of an active volcano, creates a black-and-white photo effect with black sands mixed with white snow at Neptune's Bellows.

A dip in the steaming hot springs of a black sand beach feels like an unreal experience amidst the snow-capped mountains backdrop.

## DAYS 8-9 | ANTARCTICA

Enjoy three more days of exploration on the White Continent, with an estimated two landings per day, based on weather conditions. From the remarkable blue coloring of glaciers to leopard seals napping on ice floes, the Antarctic Peninsula contains a multitude of wonders to behold. Cormorants soaring high above and orcas breaching the waters below surround you with a magnificent array of wildlife that calls to your inner explorer.

Visit the permanent ice cap at Cuverville which houses Port Lockroy, a flagship historic site for the main base building of Bransfield House. It's also home to the famed Penguin Post Office, the southernmost post office in the world where you can create unforgettable memories among the Gentoo penguins.

At Neko Harbor, watch for humpback whales as their flukes come above the water and splash back down. Paradise Bay offers a glimpse into scientific research at Argentina's Almirante Brown Antarctic Base or Chile's González Videla Antarctic Base. Cruise in zodiacs along icebergs with your expedition guides, and enjoy daily optional activities including kayaking, paddleboarding, and of course, a polar plunge.

**NOTE:** Captain's Choice ports of call add to the sense of adventure and element of surprise. Your ship's master will navigate the changing weather conditions as needed to take you to the best areas for wildlife viewing. Captain's Choice ports include: Deception Island, Paulet Island, Brown Bluff, Neko Harbor, Paradise Bay, Cuverville Island and Goudier Island.

**ONCE-IN-A-LIFETIME MOMENT:**  
LAUNCH YOUR KAYAK THROUGH  
THE CALM AND CLEAR WATERS TO  
SKIM OVER SMALL PIECES OF  
FLOATING ICE WHEN YOUR  
CAPTAIN BRINGS YOU TO A SAFE  
HARBOR.

# ITINERARY



## DAY 10 | DRAKE PASSAGE NAVIGATION

Recross the Drake Passage on the journey back to South America. The meeting of warm and cold waters creates an environment that attracts marvelous wildlife and the chance to witness humpback whales and hourglass dolphins that accompany the voyage back home. The soundtrack of the journey through the Drake Passage includes the cry of petrels, skuas, and gulls. We will enjoy another series of lectures and presentations on all the wildlife we have seen throughout the journey. We'll discuss the conservation of this remarkable part of the planet as well as the stewardship of its land and seas in the years to come.

## DAY 11 | CAPE HORN, CHILE

Behold the lush, yet imposing cliff, as you pass Cape Horn, the southerly head of Tierra del Fuego. Enjoy a final lecture and discussion on the conservation of this remote part of the world, and a farewell celebration on the World Navigator.

## DAY 12 | USHUAIA, ARGENTINA

Arrive safely back at port in the morning at the "End of the World," Ushuaia, Argentina. Today we will have the chance to further explore this town and its wild natural surroundings. Enjoy a wide variety of hikes for all skill levels through the forest of Parque Yatana and its lush nature and rich, indigenous culture.

The forest's name translates to "weave" in the native language of Yaghan. Take a ride on the Train at the End of the World, and visit the Maritime Museum at the Presidio in town. We will celebrate our travels with a farewell Argentinean feast, local music, and authentic boleadora performance before boarding our plane back to Orlando, Florida.

## DAY 13 | DEPARTURE

Arrive Back to Buenos Aires to connect with add-on adventures across South America or connecting flights back home.



# THE SHIP











IF YOUR IDEA OF LUXURY IS ALL INCLUSIVE ALL THE WAY, WE AGREE.



On our trip, you will be guaranteed a shared Veranda cabin with private facilities and balcony, and of course there are multiple upgrade options.

World Navigator features four decks of accommodations, totaling just under 100 suites and staterooms that range in size and spaciousness to suit your priorities. All feature cinematic ocean views. Nearly all include balconies. And the interior décor is selected with a designer's eye. Take your pick and enjoy the perfect balance of rugged days and indulgent nights on board World Navigator.

# LUXURY WELLNESS WONDER

## **ROUNDTrip AIRFARE FROM BUENOS AIRES**

Private Jet with world class service

## **TWO EXCURSIONS PER DAY**

An adventure for every type of traveler as we land our zodiacs on the ice (weather-dependent)

## **UNLIMITED PREMIUM POURS**

You'll sip well with highly-rated Chilean wines, open bar, and non-alcoholic options in addition to glacier pure water, local juices, and specialty coffees

## **REFINED ACCOMMODATIONS**

Wake up each day in a plush bed to sweeping panoramas

## **IN-ROOM INDULGENCES**

Complimentary 24-hour room service and L'Occitane bath, body and hair care products

## **SELF-CARE ON US**

Work it out with fitness, stretching, wellness and yoga classes and optional spa services

## **GOURMET 5-STAR CUISINE**

Your palate will be more than pleased

## **ENRICHMENT CLASSES**

Learn about diverse subjects in the far south such as filmmaking and digital photography in the seventh continent, as well as Antarctic conservation and governance in the years ahead

## **PREPAID GRATUITIES**

Leave your wallet alone the entire voyage

## **INTERNET ACCESS**

Standard wireless internet service throughout the ship when accessible (given the remote destination)





# TREAT YOURSELF WITH THESE EXTRAORDINARY EXTRAS

*STARTING AT \$19,995 NZD, ALL INCLUSIVE.*

## **Absolute Relaxation and Comfort for Everyday Convenience:**

- L'OCCITANE en Provence bath
- Setup bar and stocked mini fridge
- Terrycloth robe and slippers
- Private espresso machine with complimentary coffee and tea
- Egyptian cotton bed linens
- Duvet and pillow
- Wireless internet service

## **Complimentary Pluses:**

- Personal, reusable water bottle
- Nightstands equipped with power outlets (110/220 voltage +)
- Private stationery USB ports
- Use of binoculars
- Use of umbrella
- Private climate control
- Quality cabin amenities such as
- personal safe, iron/ironing board,
- hairdryer and satin hangers
- Around-the-clock room service \*
- In-suite butler service

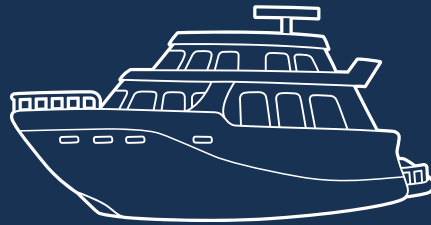
## **In-Room Entertainment:**

- Music channels and on-demand movies
- Daily world news programming
- Streaming

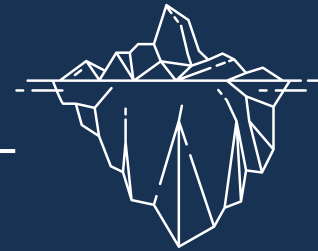
# HIGHLIGHTS



**Premier Wildlife**  
Sightings



**Luxurious**  
Vessel



**Bewildering**  
Landscapes



5



6

# EXTRA INCLUSIONS

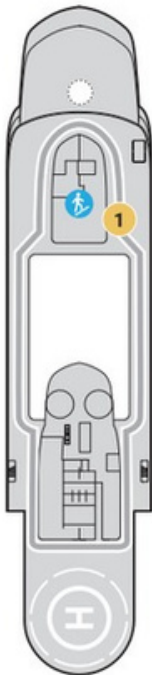
- ⊕ **EXCLUSIVELY** ON POLAR EXPEDITIONS
- ⊕ **FREE** cultural immersion
- ⊕ **FREE** private charter flight service\*
- ⊕ **FREE** enrichment lectures and destination briefings
- ⊕ **FREE** shore landings led by expert field guides
- ⊕ **FREE** escorted sightseeing safaris by Zodiac
- ⊕ **FREE** polar plunge
- ⊕ **FREE** Atlas Ocean Voyages parka and vest
- ⊕ **FREE** use of knee boots
- ⊕ **FREE** private group transfers between airport and yacht\*



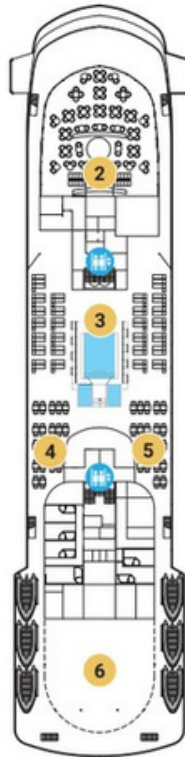
# WORLDNAVIGATOR



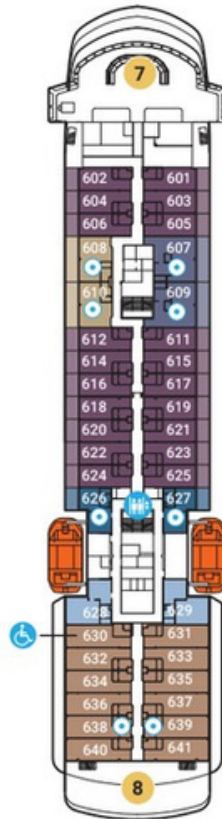
DECK 8



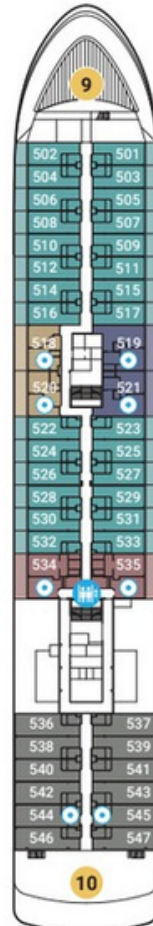
DECK 7



DECK 6



DECK 5



DECK 4



DECK 3



## DECK 8

- 1 JOGGING TRACK

## DECK 7

- 2 THE DOME  
OBSERVATION LOUNGE
- 3 POOL AND HOT TUBS
- 4 7-AFT GRILLE
- 5 7-AFT POOL BAR
- 6 ZODIAC STORAGE

## DECK 6

- 7 BRIDGE
- 8 SMALL SUNDECK

## DECK 5

- 9 WATER'S EDGE
- 10 LARGE SUNDECK

## DECK 4

- 11 DOM HENRIQUE  
THEATER
- 12 ATLAS LOUNGE
- 13 MEDICAL CENTER
- 14 RECEPTION
- 15 RETAIL
- 16 PAULA'S PANTRY
- 17 FITNESS STUDIO
- 18 SEASPA/SAUNA
- 19 PORTO
- 20 PORTO AL FRESCO

## DECK 3

- 21 MUD ROOM

## SUITES

- NAVIGATOR (NS)
- DISCOVERY (DS)
- JOURNEY (JS)
- SOLO (C1)

## STATEROOMS

- HORIZON DELUXE (E1)
- VERANDA DELUXE (E2)
- HORIZON (A1)

- HORIZON (A2)
- VERANDA (B1)
- VERANDA (B2)

## SYMBOLS

- SLEEPS 3 WITH SOFA BED
- ELEVATOR/STAIRS
- STAIRS
- ADA ACCOMMODATIONS

## SPECIFICATIONS

- LENGTH: 129m/423'
- WIDTH: 18.9m/62'
- GROSS TON: 10,000t
- DECKS: 6
- ACCOMMODATIONS: 98
- CRUISING SPEED: 16kt/18mph
- SPACE RATIO: 53 SQ. FT./GUEST

**Overall Length**  
129m/423'

**Beam (Width)**  
18.9m/62'

**Gross Tonnage**  
10,000

**Guest Decks**  
6

**Accommodations**  
100

**Guests**  
198

**Cruising Speed**  
16kt/18mph

**Ships' Registry**  
Portugal

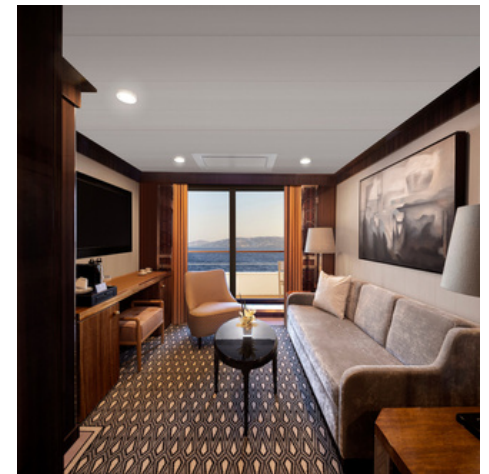


## NAVIGATOR SUITE (NS)

- 465 sq. ft.
- Oversized private balcony with teak furnishings
- Queen bed (convertible to two single beds)
- Elegant private marble spa bathroom featuring L'OCCITANE bath amenities
- Walk-in mosaic glass shower with rain head and body jets, a tub and double sinks
- Walk-in closet and wardrobe
- Living room with sofa, vanity and mini fridge
- Includes 2 wall-mounted TVs with "infotainment" system



## THE CABINS



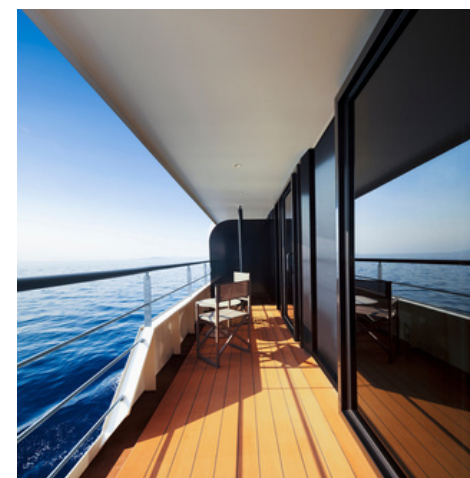


- 445 sq. ft.
- Oversized private balcony with teak furnishings
- Queen bed (convertible to two single beds)
- Elegant private marble spa bathroom featuring L'OCCITANE bath amenities
- Walk-in mosaic glass shower with rain head and body jets
- Walk-in closet and wardrobe
- Living room with sofa, vanity and mini fridge
- Includes 2 wall-mounted TVs with "infotainment" system



## JOURNEY SUITE (JS)

- 382 sq. ft.
- Oversized private balcony with teak furnishings
- Queen bed (convertible to two single beds)
- Elegant private marble spa bathroom featuring L'OCCITANE bath amenities
- Walk-in mosaic glass shower with rain head and body jets
- Walk-in closet and wardrobe
- Living room with sofa, vanity and mini fridge
- Includes 2 wall-mounted TVs with "infotainment" system



## DISCOVERY SUITE (DS)



## VERANDA DELUXE STATEROOM (E2)

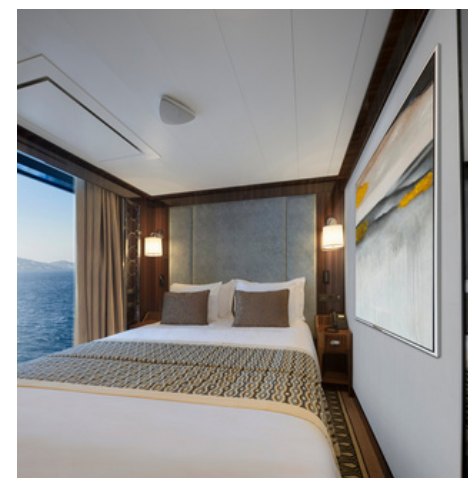
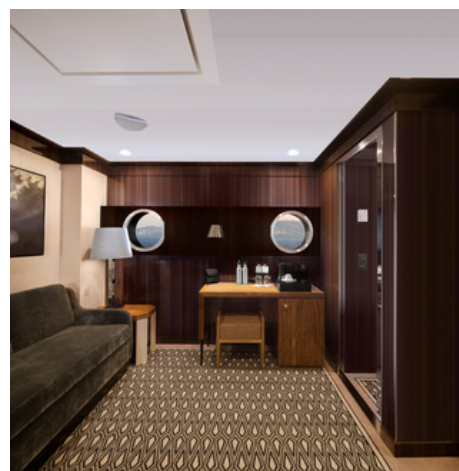
- 300 sq. ft. total living space with 52-sq. ft. balcony featuring teak furnishings
- Elegant private marble spa bathroom featuring L'OCCITANE bath amenities
- Walk-in mosaic glass shower with rain head and body jets
- Wardrobe
- Living room with sofa, vanity, mini fridge and TV with "infotainment" system



- 300 sq. ft. total living space with floor-to-ceiling Juliette Balcony with top-drop electric window
- Elegant private marble spa bathroom featuring L'OCCITANE bath amenities
- Walk-in mosaic glass shower with rain head and body jets
- Wardrobe
- Interior seating area with sofa, mini fridge and TV with "infotainment" system



## HORIZON DELUXE STATEROOM (E1)





## VERANDA STATEROOM (B1/B2)

- 270 sq. ft. total living space
- Elegant private marble spa bathroom featuring L'OCCITANE bath amenities
- Walk-in mosaic glass shower with rain head and body jets
- Wardrobe
- Sitting area with sofa, mini fridge and TV with "infotainment" system



- 270 sq. ft. total living space with floor-to-ceiling Juliette Balcony with top-drop electric window
- Elegant private marble spa bathroom featuring L'OCCITANE bath amenities
- Walk-in mosaic glass shower with rain head and body jets
- Wardrobe
- Sitting area with sofa, mini fridge and TV with "infotainment" system



## HORIZON STATEROOM (A1/A2)



# KEY DETAILS

## INCLUSIONS

- 2 Nights Accommodation in Buenos Aires
- Charter flights to and from Ushuaia
- 10 day, 9 night voyage with accommodation in a shared cabin with private facilities and balcony
- All Zodiac landings and excursions
- Exploration and climate programming
- Special edition expedition parka
- Use of rubber boots and necessary expedition equipment
- Private guides and lectures by our English-speaking expedition leaders Educational presentations, lectures, and activities aboard the ship
- All meals aboard – breakfast, lunch, dinner and afternoon snacks
- Unlimited premium pours of beer, wine, spirits, speciality coffee, tea, and soda Welcome champagne reception Comprehensive cultural information and reading materials
- Standard wireless internet throughout the ship
- Medical evacuation insurance up to \$200,000 USD
- All gratuities, service taxes, and port fees
- Cultural immersion on every voyage Dining venues with ever-changing menus
- Unlimited beverages, including fine wines, spirits and craft beers
- Open bars and lounges, including 24-hour bar service with specialty canapés
- In-room minibar with your preferences
- Specialty coffees, teas and fresh-pressed juices
- Afternoon and high tea
- Champagne and gourmet canapés during meet and greet
- 24-hour room service, including spirits, wine and beer
- L'OCCITANE bath amenities
- Pre-paid gratuities
- Use of walking sticks and binoculars Reusable water bottle
- Butler service and expanded room service menu in suites



# KEY DETAILS

## EXCLUSIONS

- Flights/transportation to and from Buenos Aires
- Optional ship activities [kayaking, snowshoeing, paddle boarding].
- Transportation of luggage in excess of weight allowance.
- Travel insurance (strongly recommended).
- Food and beverage other than that specified in itinerary.
- Expenses of a purely personal nature.
- Costs associated with trip interruption or modification due to weather, travel conditions, political/civil disputes, medical emergencies, or other causes beyond our control.

# EXTEND YOUR STAY

## PERU

### THE ADVENTURE CONTINUES...



Discover the historic Inca Trail, a winding path across the Andes with views of snow-capped mountains, enormous granite cliffs, and the Amazon tropical jungle basin. While we tour the best of Peru's ancient wonders, including a full day at Machu Picchu, the fabled "Lost City of the Incas," get ready to make lifetime friends and acquire amazing experiences. A variety of walking and trekking options with breathtaking vistas are available. Meet some new friends and possibly some alpacas and llamas while listening to the combination of African, Andean, and Spanish music. We will also eat fresh ceviche and discover how to make frothy drinks.





## HIGHLIGHTS



**Storied Trails.** Learn the history of Peru on guided walks through architectural marvels of an extraordinary empire.



**Archaeologic Treasure.** Take a scenic train to Aguas Calientes, at the foot of Machu Picchu. Climb up an ancient staircase to reach the crown jewel of the Inca empire, standing proud high in the Andes.

**Peruvian Cuisine.** Dine on fresh ceviche, learn how to make Peruvian pisco sours, and enjoy local delicacies in the colonial town of Cusco and the cosmopolitan food-centric city of Lima.

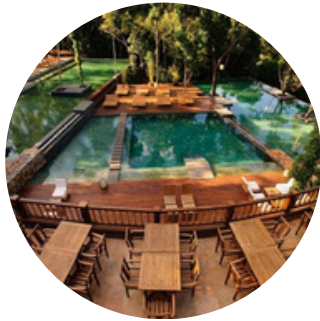


**Expert Storytellers.** Meet with scholars and local cultural and development organizations. Hear tales of one of the world's greatest civilizations by expert archaeologists and historians during the trek through the Sacred Valley.



# EXTEND YOUR STAY

## IGUAZU FALLS



## THE ADVENTURE CONTINUES...

Be ready for warm, humid weather and a brand-new variety of amazing creatures. We will embark to Iguazu, a mystical location dubbed one of the world's natural wonders for its stunning, verdant splendor. We will take part in both land- and water-based tours to learn more about the two national parks that Iguazu Falls encompasses. Iguazu National Park, together with its Brazilian sister park Iguaçu, is one of the most visually and sonically beautiful places on earth. It is situated in Misiones Province in the northeastern tip of Argentina and borders the state of Paraná to the north. The fact that it was included on the World Heritage List in 1984 serves as a powerful reminder of the splendor of our planet,



## HIGHLIGHTS



**World's Largest Waterfall System.** Explore the several viewpoints of the Falls, including the most well-known, La Garganta del Diablo (The Devil's Throat)..



**Brazilian side of Iguazu Falls** Take in a 360-degree vista that transports you to the water's edge



# OUR PARTNERS

## TRAVEL PARTNERS



Fortis Events crafts unique trips to help clients and customers enjoy extraordinary experiences across the globe. Their hands-on team employs a personal approach and works in partnership with trusted industry contacts. They serve a range of clients, from top companies to small groups and are committed to delivering customized experiences that exceed expectations.

## CHARITY PARTNER



HILLARY INSTITUTE

The Hillary Institute of International Leadership aims to identify and support emerging leaders who have the potential to make a positive impact on society and the environment. The organization provides training programs that empower leaders to create change in their communities and beyond. The institute focuses on diverse global challenges, including climate change, social justice, and sustainable development.





## ADDITIONAL PARTNERS



KEA, which stands for Knowledge Economy Association, is a non-profit organization that aims to support the development of knowledge-based industries in Europe. The organization provides research, advocacy, and networking opportunities for its members, which include businesses, universities, and research organizations. Through its activities, KEA strives to foster economic growth, create high-quality jobs, and promote sustainable development in Europe.



Wonder and Wander is a luxury experience agency that specializes in experiences and community design. Their mission is to provide clients with exceptional, one-of-a-kind experiences centred around connection and impact. Wonder and Wander collaborates with individuals and companies to bring imaginative creative visions to life and delivers distinguished and unforgettable experiences.



EXPERIENCE STEWARDSHIP UNSTOPPABLES

# Journey to the Heart of Antarctica

**A BUSINESS RETREAT LIKE NO OTHER**

[travel@insiderexpeditions.com](mailto:travel@insiderexpeditions.com)

+1 (929) 930 2814

INSIDER  EXPEDITIONS

kea

WONDER  WANDER

 UNSTOPPABLES